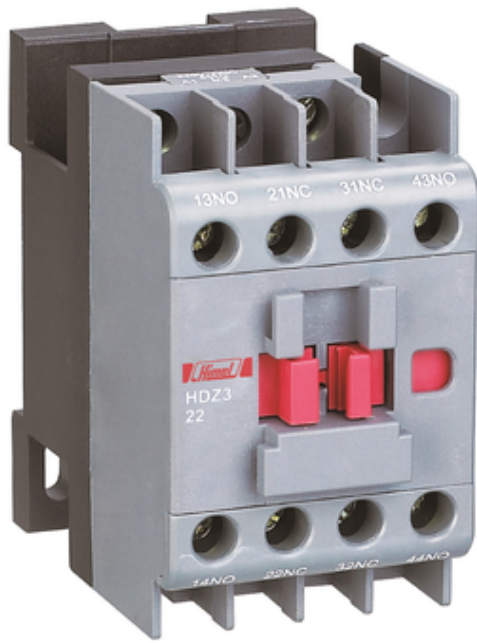


## Product data sheet

## HDZ340X5

### Characteristics

Contactor relay, HDZ3, 440 V, 50 Hz



### Main

|                               |                 |
|-------------------------------|-----------------|
| Range of product              | HDZ3            |
| Product or component type     | Contactor relay |
| Poles description             | 3P              |
| [Uc] control circuit voltage  | 440 V AC        |
| Auxiliary contact composition | 4 NC            |

### Complementary

|   |  |
|---|--|
| Utilisation category                        | AC-15<br>DC-13                                 |
| [Ie] rated operational current              | 0.95 A at 380 V AC-15<br>0.15 A at 220 V DC-13 |
| Network frequency                           | 50 Hz  |
| [Ui] rated insulation voltage               | 690 V  |
| [Uimp] rated impulse withstand voltage      | 6 kV   |
| Mechanical interlocking                     | Without mechanical interlock                   |
| [Ith] conventional free air thermal current | 10 A   |
| Mechanical durability                       | 11000000 cycles                                |
| Electrical durability                       | 1100000.0 cycles                               |

### Environment

|                                       |                  |
|---------------------------------------|------------------|
| Standards                             | EN/IEC 60947-5-1 |
| Product certifications                | CE               |
| IP degree of protection               | IP20             |
| Pollution degree                      | 3                |
| Ambient air temperature for operation | -5...40 °C       |
| Ambient air temperature for storage   | -25...55 °C      |
| Operating altitude                    | 2000 m           |
| Relative humidity                     | 0...90 %         |

### Packing Units

|                              |     |
|------------------------------|-----|
| Unit Type of Package 1       | PCE |
| Number of Units in Package 1 | 1   |